



Standards  
Certification  
Education & Training  
Publishing  
Conferences & Exhibits



# Get Involved in ISA Membership

*Setting the Standard for Automation™*

**ISA helps you do your job  
more efficiently.**

**As a member of ISA,** the International Society of Automation, you are connected to a worldwide network of technical and professional knowledge that can help propel your career and business to new heights. Information is power, and as a part of ISA's global membership, you are connected to the most timely, most useful information in the automation profession.

Take advantage of ISA's outstanding reputation for technical information. With our expertise at your fingertips, you have a wealth of resources readily available to you.

ISA is recognized worldwide for:

- Standards
- Certification
- Education & Training
- Publishing
- Conferences & Exhibitions

**If you have questions about your ISA membership at any time, please contact ISA's friendly staff for fast, courteous service.**

- Phone: +1 919-549-8411
- Fax: +1 919-549-8288
- Email: [info@isa.org](mailto:info@isa.org)
- Online: [www.isa.org](http://www.isa.org)

# Inside This Booklet

## **About ISA** .....4

ISA has over 28,000 members from 110 countries and continues to thrive as a resource and active force for automation professionals on a global scale

## **Member Grades** .....5

Membership grades designed to meet your status and needs

## **Technical Divisions** .....6

Divisions bring you closer to your industry and technical interests

## **Standards** .....7

ISA has published more than 150 standards, recommended practices, and technical reports for industry use

## **Certification** .....8–9

Objective, third-party assessment and confirmation of your skills

## **Education & Training** .....10

ISA offers an extensive curriculum including more than 100 courses led by expert instructors with real-world experience

## **Publishing** .....11

ISA is the authoritative publisher of books, magazines, and technical journals covering the automation profession

## **Conferences and Exhibits** .....12

ISA hosts conferences and exhibitions that provide quality education and networking opportunities for automation professionals

## **Member Benefits** .....13

Take advantage of your online connection to boost your benefits. You can find information throughout the website using the search functions, or go to the ISA Products tab to find the reference materials you need

## **Additional Membership Benefits** .....14

Members receive special benefits and privileges such as insurance, leadership opportunities, and more

## **Rewards for Recruiting** .....15

Your connections help expand ISA's network of professionals

## **Honors and Awards** .....16–17

ISA recognizes outstanding contributions by individuals to the Society and to the industry

## **The ISA Foundation** .....18

ISA's philanthropic activities include scholarships, student competitions, standards development, professional recognition awards, and K–12 education support

## **Show your Pride** .....19

Express your pride in being a part of the only global society dedicated to your profession when you use and wear ISA logo merchandise



## About ISA

### History

Founded in 1945 as a nonprofit, educational organization, The Instrument Society of America sought to be a valuable professional resource to engineers and technicians working primarily in wet process manufacturing. Beginning by organizing 18 local instrumentation organizations into a national unit, ISA's membership and technical reach quickly grew, paralleling the rapid advancement of instrumentation technology. Today, ISA has changed its name to the **International Society of Automation** to better reflect its modern role as it sets the standard for automation. The Society now counts over 28,000 members representing 110 countries and continues to thrive as a resource and active force for automation professionals on a global scale.

### Get Involved...Volunteer!

Members' involvement in the Society keeps ISA moving forward. The Society was founded on the idea of a strong volunteer presence.

### Sections

Members belong to a local section, one of ISA's core units. Divided geographically, ISA sections help you network with professionals in your area. Each ISA section retains a great amount of autonomy to best meet its members' needs. ISA sections offer leadership opportunities, social networking functions, exhibitions, and training opportunities. To find your local section, visit [www.isa.org](http://www.isa.org), click on My ISA from the left-hand tool bar, and click on sections.

### Districts

Districts offer a broader leadership base that encompasses multiple sections within a geographical region. There are 14 ISA districts, each with a governance structure that parallels the ISA section.

**For more information about ISA's governing structure, visit [www.isa.org/governance](http://www.isa.org/governance).**

**We have a membership grade  
for all levels of your career.**

## Member Grades

There are seven different ISA member grades shaped to meet your status and needs:

**Regular**—Members receive all benefits and privileges of membership.

**Senior**—Advanced educational preparation and professional work experience are recognized with Senior grade membership. Applicants for Senior Member grade must meet specific requirements and must document their qualifications.

**Fellow**—Fellow grade is earned by Senior Members who have made exceptional engineering or scientific contributions in their specific areas of automation. Fellows are nominated by their peers and elected by the Executive Board.

**Honorary**—Honorary Member is the highest honor bestowed by the Society and is reserved for individuals whose support of, and/or contributions to, the advancement of the arts and sciences of automation deserve special recognition. They have the rights and privileges of a Senior Member.

**Life**—An ISA Member is eligible for Life membership when a) he/she completes 25 years of ISA membership (can include Student membership) and b) years of ISA membership added to age equal at least 90. Life Members enjoy the same benefits of Regular Members, but pay no dues.

**Student**—A great way for current students to begin a career in automation is with an ISA student membership. Student Members receive most of the privileges of Regular Members and have access to student-focused benefits, such as scholarships and a mentoring program.

**Virtual Student**—In cases where a Student Section or Regular Section isn't available, students can still enjoy many of the benefits of membership as Virtual Students. This membership grade interacts with the Society by electronic communications.

**For more information about ISA's membership grades,  
visit [www.isa.org/membershipgrades](http://www.isa.org/membershipgrades).**

**An ideal enhancement to your ISA membership, Division membership gives you more of what you need to succeed.**

## ISA Technical Divisions

Membership in ISA's Technical Divisions connects you with others in your industry and those who share your technical interests.

All ISA members can join two technical divisions for FREE, one from Industries and Sciences and one from Automation and Technology.

### **Choose from:**

#### **Industries and Sciences Divisions**

- Aerospace Industries
- Chemical and Petroleum Industries
- Construction and Design
- Education
- Food and Pharmaceutical Industries
- Mining and Metals Industries
- Power Industry
- Pulp and Paper Industry
- Water and Wastewater Industries

#### **Automation and Technology Divisions**

- Analysis
- Automatic Controls and Robotics
- Communications
- Management
- Process Measurement and Control
- Safety and Security
- Test Measurement

#### **Technical Interest Groups (free to join)**

- Glass and Ceramic
- Textile

### **Division Web Pages**

Here you'll find free technical papers, the latest newsletter, information on division issues, items of interest to members, and division contacts.

### **Email Discussion Lists**

These lists let you exchange information with other members. You can ask for advice and get answers almost immediately from around the world.

### **Newsletter**

Divisions publish at least one newsletter each year. Issues contain a message from your division director, technical papers, and articles of interest submitted from other members. Contributions are always welcome, so feel free to send in an article to your editor.

### **Technical Symposia and Conferences**

A great place to meet fellow division members and hear speakers discussing the latest technologies is at division symposia. Your level of participation is up to you—attend, present a paper and get published, present a tutorial, or help organize the event.

**For more information about any of these divisions, or to join, visit [www.isa.org/divisions](http://www.isa.org/divisions).**

**As an ISA member you can view ISA's standards online free of charge.**

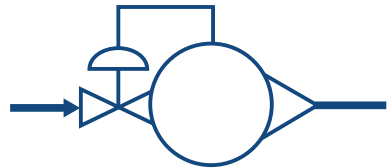
## Standards

As an ISA Member, you can view ISA's Standards\* online free of charge for your personal use. If you would like to download and print an ISA standard, you may use your annual standards credit toward this purchase.\* Your annual standards credit is equal to the dollar amount you paid for your ISA membership, i.e., \$100 for Regular Members, \$50 for Reduced-dues Countries Members, etc. The credit is available for the term of your membership.

ISA is recognized globally for the development of consensus industry standards for automation technologies and applications. This includes such key areas as security; safety; batch control; enterprise-control integration; wireless communications; and traditional instrumentation, measurement, and control. Through the dedicated efforts of industry experts from around the world, ISA has published more than 150 standards, recommended practices, and technical reports for industry use.

Our internationally acclaimed standards not only make your work more efficient, they can make it safer and can help contribute to your company's profitability. With topics covering critical issues such as security technologies for industrial automation and control systems, for example, you'll be connected to a vast resource of knowledge that will keep you up-to-date on the latest industry practices, developments, and philosophies.

ISA welcomes your input in the development of standards. Volunteer to work on a Standards Committee by visiting [www.isa.org/standardsvolunteer](http://www.isa.org/standardsvolunteer).



\*All listed IEC documents are not available for free viewing and cannot be purchased with your Standards Redemption Coupon. The coupon can be applied to downloadable and print versions of individual ISA standards documents only and cannot be applied to any other standards-related products, such as software licenses and CDs.

**To access ISA Standards, visit [www.isa.org/standards](http://www.isa.org/standards).**

**ISA provides a variety of preparatory resources for each program, including review courses, study guides, and more.**

## Certification

ISA certification provides a credible opportunity for professionals to stand out from the crowd and be recognized. ISA currently offers two certification programs: Certified Automation Professional® (CAP®) and Certified Control Systems Technician® (CCST®).

ISA's two certification programs provide benefits to the employer, the individual, and industry. ISA certification programs provide:

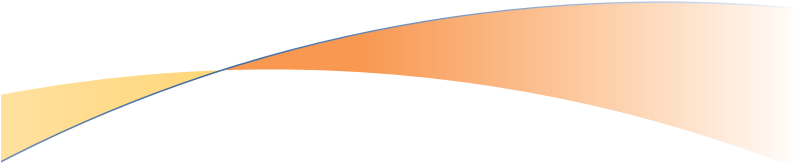
- A non-biased, third-party, objective assessment and confirmation of an employee's knowledge and skills
- A mechanism for employers to ensure employees have a high level of skill and competency
- A standard tool to qualify new hires and contractors that can also be used by industry to establish a pay-for-performance system
- Encouragement of life-long learning and professional development
- Greater opportunity for individuals for promotion, pay increases, and job portability

### Certification Programs

**The Certified Automation Professional (CAP)** Certification Program recognizes specialized education, training, and knowledge in automation. CAPs are responsible for the direction, definition, design, development/application, deployment, documentation, and support of systems, software, and equipment used in control systems, manufacturing information systems, systems integration, and operational consulting.



ISA members receive the CAP job analysis study (valued at \$150) free of charge. The analysis includes an evaluation of the key job tasks performed by automation professionals and an evaluation of their importance, criticality, and frequency.



**The Certified Control Systems Technician (CCST) Certification** Program helps automation and control technicians document their skills and experience and enhance their professional standing and marketability. CCSTs are responsible for pneumatic, electronic, and/or mechanical instrumentation; process control loops and systems; and measuring and controlling process variables.



### **Certificate Programs**

The ISA84 Certificate Programs developed by ISA and the Automation Standards Compliance Institute (ASCI), are based on understanding and applying the ISA84 standard. Each of the three certificate programs is designed to increase knowledge and awareness of the ISA84 standard and includes specialized training on ISA84 and an exam that is offered through

**Learn more about these certificate programs at [www.isa.org/isa84certificate](http://www.isa.org/isa84certificate)**

**For more information on these certification and licensing programs, visit [www.isa.org/certify](http://www.isa.org/certify).**

the Prometric testing centers. Certificate program applicants who successfully complete the exam will be issued an ISA certificate specifying that they have successfully completed that specific certificate program.

**Certificate 1:** SIS Fundamental Specialist

**Certificate 2:** SIL Selection Specialist

**Certificate 3:** SIL Verification Specialist

Individuals who achieve all three certificates will receive the designation: ISA84 Safety Instrumented System (SIS) Expert.

### **Additional Resource**

**Control Systems Engineering (CSE) Exam Preparation.** ISA helps prepare automation and control engineers for the Control Systems Engineering (CSE) Professional Engineer (PE) license exam with a study guide, a three-day exam review course, and a web seminar series.



**ISA members receive significant discounts on all purchases, including books, conference proceedings, training, software, and more.**

**Automation professionals and technicians are sure to find ISA is their primary source for continuing education.**

## Education and Training

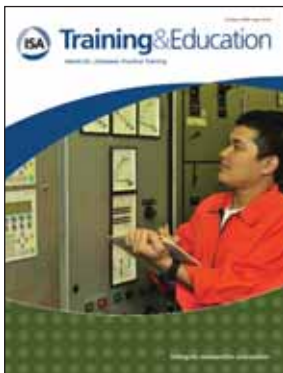
ISA is recognized worldwide as a leader in non-biased, vendor-neutral education and training programs for automation professionals. Industry professionals, whether experienced engineers, practicing technicians, or newcomers to the industry, can hone their skills at ISA's regional training centers, through onsite training programs at their companies, at special conference events, or via distance education.

ISA offers extensive hands-on training and career development curricula including more than 100 courses led by expert instructors with real-world experience.

You'll also want to take advantage of ISA's distance learning options available as self-paced online courses, live web seminars, and DVDs and online or CD courses.

All ISA members have free access to a library of over 40 pre-recorded web seminars. Available topics include safety instrumented systems, ethernet, control systems security, ground-ing, fieldbus, and much more.

**Look for member discounts!**



**To view a current catalog of courses and distance learning products, visit [www.isa.org/training](http://www.isa.org/training).**

**Fine-tune your expertise  
with our cutting-edge  
publications.**

## Publishing

ISA is the authoritative publisher of books, magazines, and technical journals covering the automation profession. Written and reviewed by experts, these publications help keep automation professionals fully informed about the latest technical developments, applications, trends, and standards. ISA print and online magazines feature the latest industry and business news impacting the automation profession.

### ***InTech***

All ISA Members automatically receive a free subscription to the bi-monthly magazine, *InTech*. This outstanding magazine brings you the latest technological developments, emerging trends, and recent industry news. Articles from current and past issues are available to search and read online at [www.isa.org/InTech](http://www.isa.org/InTech).

### ***Automation Weekly***

This free weekly e-mail newsletter provides an in-depth analysis of technology, corporate, and personnel developments in the field of automation, with insightful investigation of events and developments in the industry.

### ***ISA Technical Papers***

As an ISA Member, you have exclusive free access for personal use to over 2,500 technical papers from ISA conferences and symposia. New papers are added each year as new conferences are conducted.

### ***ISA Directory of Automation***

This free annual compilation lists manufacturers and distributors of automation products and services.

### ***ISA Transactions***

*ISA Transactions* is provided online free of charge to all Members. This peer-reviewed journal will keep you up-to-date on the state-of-the-art in the science and engineering of measurement and automation.

**To request a current publications and standards catalog,  
visit [www.isa.org/shopisa](http://www.isa.org/shopisa).**

**Networking and professional development all in one place!**

## Conferences and Exhibits

ISA hosts several annual events ranging in size from one-day technical conferences focused on specific industry issues, to conferences spanning several days covering a multitude of topics and industries. Attendees of these events gain access to the latest product developments, real-world scenarios, and presentations delivered by experts, peers, and industry leaders. These events provide quality continuing education to automation professionals and provide businesses an unparalleled opportunity to maximize their productivity and ensure their long-term growth. Gain access to these great automation events for less when you use your Member discount!

### **ISA Automation Week**

ISA Automation Week is an intensive educational and applications-based technical conference offering the latest industry developments and standards in key manufacturing disciplines

like automation, energy and power, green manufacturing, instrumentation and process control, safety and security, systems and enterprise integration, and wireless, networking, and industrial communications. Vendor exhibits will complement the knowledge-based event and offer attendees their latest product developments.

### **Technical Conferences/Symposia**

ISA's Technical Conferences and Symposia are a great place to meet like-minded professionals in your industry, and they also provide a venue for you to get published. Hear speakers discuss the latest trends and technologies, earn Professional Development Hours, take a training class and earn Continuing Education Units, or network with peers and experts. Your level of participation is up to you as a member: attend, present a paper, or help organize the event!

**For a complete schedule and/or to participate, visit [www.isa.org/events](http://www.isa.org/events).**

## More Member Benefits

### [www.isa.org](http://www.isa.org)

When you need to find out anything about the ISA resources available to you or to get the latest industry and technical information, visit [www.isa.org](http://www.isa.org) first. You can find information throughout the site using the search functions, or go to the ISA Products tab to find the reference materials you need.

Some of the information is exclusive for ISA Members, so it is important to log on using your Member number and Password. Your Member number is on your ISA Member Card and the Password is your last name, until you select another.

### [ISAJobs.org](http://ISAJobs.org)

ISA's online career center at [www.ISAJobs.org](http://www.ISAJobs.org) is the connection for employers, job seekers, and contractors in the automation industry. As a Member, you can post your resume to be viewed by the top companies in the industry for free. An email will notify you every time a new position is listed, making it even easier to take the next step in your career.

### Email Discussion Lists

ISA offers numerous email discussion lists covering a variety of topics. List members can ask questions, offer advice, or discuss the latest news. Most sections have a list for their members to discuss local industry events, section meetings, and other news of interest. Each technical division has a list for division members to discuss that industry or technology. The ISANetwork technical communities have lists that are open to the public to discuss topics of interest. You can read past messages or sign up to join the discussion online at [www.isa.org/technicalforums](http://www.isa.org/technicalforums).

### Email Address

ISA provides a free e-mail alias address that you can use as long as you are a current member. [yourname@member.isa.org](mailto:yourname@member.isa.org) can forward e-mail to your regular e-mail account automatically, or you can use it as your primary account.

**ISA offers a variety of benefits to suit your needs.**

## ...and More

### **Leadership Opportunities**

Gain or further develop your leadership skills through ISA's free online Leadership Development Certificate Program and through hands-on, active leadership roles as a volunteer.

### **Mentor Program**

Connect online with, and learn from, experienced professionals and practitioners. Or share your expertise and wisdom as a mentor.

### **Insurance**

Automobile, long-term care, multiple group, and international travel insurance plans are available to ISA members at competitive rates.

### **CollegeBound Fund<sup>SM</sup>**

Save for higher education and pay no sales transaction fees with this tax-advantaged 529 college savings program.

### **Reciprocal Membership**

Broaden your professional network with discounted reciprocal memberships as an ISA member with The Institute of Measurement and Control (InstMC), VDI/VDE-Gesellschaft Mess-und Automatisierungstechnik (GMA), and the Institute of Instrumentation Control and Automation (IICA).

### **ISA Member Logo**

Proudly display your affiliation with ISA by displaying the ISA member logo on your business card.

### **CogniCall Global Calling Card**

Calling card services at competitive rates.

**and much more.**

**To learn more about special Member privileges, visit [www.isa.org/memberbenefits](http://www.isa.org/memberbenefits).**

**Introduce your colleagues to the benefits of ISA membership.**

## **Rewards for Recruiting**

YOU are ISA's best source of new members. Your colleagues will appreciate your contribution to their career development when you introduce them to the benefits of ISA membership.

Your connections help expand ISA's network of professionals, benefiting your fellow members around the world. ISA's Rewards for Recruiting Program recognizes these contributions. The program is simple.

**Recruit one new member** and you'll receive a special gift.

**Recruit five new members** over the course of the year and you'll receive a \$100 gift certificate good towards any ISA merchandise, publications, or standards purchase or any ISA technical conference or training course registration.

**To learn more about ISA's Rewards for Recruiting Program, visit [www.isa.org](http://www.isa.org) and click on Membership, Benefits, Rewards for Recruiting**

**One of the best satisfactions you can receive is recognition by your peers.**

## Honors and Awards

ISA recognizes Society Members' devotion, skills, and accomplishments—both for technical contributions to the profession and for contributions to the Society—during an evening of distinction at the Society's annual, black-tie, ISA Honors & Awards Gala. It is a great honor and privilege for Members to be recognized at this pinnacle, highly prestigious event that attracts hundreds of esteemed guests and Members.

**Honorary Member**, the highest honor bestowed by the Society, recognizes exceptional individual support and/or contributions to advancement of the automation profession.

**ISA Fellow Member** grade acknowledges outstanding achievements in scientific or engineering fields as recognized by ISA peers.

### Founder Awards

**Arnold O. Beckman Founder Award** recognizes a significant technological contribution to the conception and implementation of a new principle of instrument design, development, or application.

**Albert F. Sperry Founder Award** recognizes an outstanding technical, educational, or philosophical contribution to the science and technology of instrumentation, systems, and automation.

### Technical Awards

**Douglas H. Annin Award** recognizes an outstanding achievement in the design, application, or development of the components in an automatic control system from the input measurement through the final control element.

**E.G. Bailey Award** recognizes excellence in the design, development or application in instrumentation and control systems in the utilities or process industries.

**Kermit M. Fischer Environmental Award** recognizes outstanding achievement in the conception, design, and/or implementation of an application of instrumentation and/or automatic control in the field of environmental science.

**ISA Analysis Division Luft Award** recognizes outstanding contributions in the analytical technical field.

**UOP Technology Award** recognizes an outstanding achievement in the conception, design, or implementation of instrumentation and/or process control in an area of activity covered by the scope of the Society's Automation & Technology Department.





## Service Awards

**Life Achievement Award** recognizes individuals with a history of sustained dedication to the automation community.

**Golden Achievement Award** recognizes ISA Members who have at least 25 years of continuous membership and active Society service.

**Distinguished Society Service Award** recognizes ISA Members who have at least 15 years of accumulated devoted Society service.

**Emerging Leader Award** recognizes ISA Members who, with 10 or less years of accumulated membership, have made significant contributions to the Society.

## Education Awards

**Donald P. Eckman Education Award** recognizes an outstanding contribution toward education and training in the science, engineering, and technology of instrumentation.

**Don W. Thompson Award** recognizes exemplary efforts to encourage and support student activity and to mentor students.

**To learn more about ISA service and recognition honors and awards, visit [www.isa.org/honorsandawards](http://www.isa.org/honorsandawards).**

## Other Recognitions

**Excellence in Documentation Award** recognizes the author(s) of the most outstanding article, paper, or other document published by the Society.

**Standards & Practices Award** recognizes ISA Members for outstanding contributions to ISA's standards and practices effort.

**Distinguished Friends of ISA** recognizes companies that provide significant support for ISA and assist the Society in achieving its goals and objectives.

**Section Performance Award** recognizes ISA Sections for achievements or for outstanding accomplishments in a particular area of Section activity.

**Outstanding Division Award** recognizes a Division of the Automation & Technology and Industries & Sciences Departments of ISA for outstanding activities and definitive reporting during the year.



## The ISA Foundation

The ISA Foundation was established to raise funds to support ISA's philanthropic activities that include scholarships, student competitions, standards development, professional recognition awards, and K-12 education support. Gifts and donations of all kinds are welcomed to support these activities.

### ISA Educational Foundation

The ISA Educational Foundation awards scholarships to graduate and undergraduate students demonstrating outstanding potential for long-range contribution to the field of automation. Scholarship awards support tuition, related expenses, and research activities. Students from educational institutions throughout the world are eligible to apply.

**Special Matching Opportunity**—ISA offers a special matching opportunity—contribute \$25 or more to the ISA Educational Foundation and your contribution will be matched by ISA. This unique opportunity allows you to double your contribution to support education in automation disciplines.

**Endowments**—ISA will form a scholarship endowment in your name for a

designated school or purpose for a minimum total donation of \$10,000. With ISA's special matching opportunity in place, a \$5,000 donation by you or your company will establish this special endowment. The ISA Educational Foundation plans to produce a 5 percent return on endowments to continuously support scholarships.

### ISA Standards Foundation

Throughout its many years of service to industry, ISA has facilitated the development of standards, technical reports, and recommended practices in automation. The ISA Standards Foundation is the avenue for you and your company to support this important contribution to economic development and technology transfer.

**Special Standards Donation Matching Program**—ISA's Standards Donation Matching Program ensures that your contribution of \$25 or more to the Standards Foundation will be matched dollar-for-dollar by ISA. You and your company can support vital standards development by giving financial support to the ISA Standards Foundation.

**For more information on the ISA Foundation and its fundraising activities, visit [www.isa.org/educationalfoundation](http://www.isa.org/educationalfoundation).**

**Express your pride in being a part of ISA when you use and wear ISA logo merchandise**

## Show Your Pride

### Cap



Stylish and comfortable—the 6-panel, cotton, stone-wash, adjustable-size, khaki cap is the perfect accessory

for casual days in the sun.  
Member: \$12; List: \$14

### Denim Shirt



Show your pride in ISA with our signature 100% cotton long-sleeved denim shirt. (Sizes: M, L, XL, XXL)

Member: \$26; List: \$30

### Polo Shirt



You can't show your support better (or look better doing it) than with ISA's handsome short-sleeve, cotton

piqué, polo shirt with blue-trimmed collar and cuffs. (Sizes: M, L, XL, XXL)  
Member: \$26; List: \$30

### Dress Shirt



Dressing up was never so easy. This shirt will lend a touch of class to any situation, while

showing your support. Cotton-polyester mix with button-down collar and patch pocket. (Sizes: S, M, L, XL, 2XL, 3XL, 4XL; by special order only)  
Member: \$32; List: \$36

### Cross Pen



Writing has never been so fashionable as it is with our chrome Cross® pen featuring the ISA logo.

Member: \$24; List: \$29

*Contact ISA for shipping charges and applicable sales tax. All prices shown are in US dollars. Call for bulk order discounts.*

**To see more ISA logo merchandise or to place your order, visit [www.isa.org/shopisa](http://www.isa.org/shopisa).**



Founded in 1945, the International Society of Automation ([www.isa.org](http://www.isa.org)) is a leading, global, nonprofit organization that is setting the standard for automation by helping over 30,000 worldwide Members and other professionals solve difficult technical problems, while enhancing their leadership and personal career capabilities. Based in Research Triangle Park, North Carolina, ISA develops standards, certifies industry professionals, provides education and training, publishes books and technical articles, and hosts conferences and exhibitions for automation professionals. ISA is the founding sponsor of the Automation Federation ([www.automationfederation.org](http://www.automationfederation.org)).

**International Society of Automation**

67 Alexander Drive

P.O. Box 12277

Research Triangle Park, NC 27709

**PHONE** +1 919-549-8411

**FAX** +1 919-549-8288

**EMAIL** [info@isa.org](mailto:info@isa.org)

[www.isa.org](http://www.isa.org)



Learn more about ISA member benefits by scanning this code with your smart phone. To scan the QR code, you first need to download a FREE QR code or barcode reader for your specific phone, available online through your app market.